



Write your name here

Surname

Other names

Scholarship Paper- Sixth Form

Subject: Geography

Time: 1 hour

You must have:

Pen

Total Marks

50

Instructions

- Use **black** ink or ball-point pen.
- **Fill in the boxes** at the top of this page with your name.
- Answer **both** questions in Section A.
- Choose **one** question in Section B.
- Choose **one** question in Section C.

Information

- The total mark for this paper is **50**.
- The marks for **each** question are shown in brackets
 - *use this as a guide as to how much time to spend on each question.*

Advice

- Read each question carefully before you start to answer it.
- Keep an eye on the time.
- Write your answers neatly and in good English.
- Try to answer every question.
- Check your answers if you have time at the end.

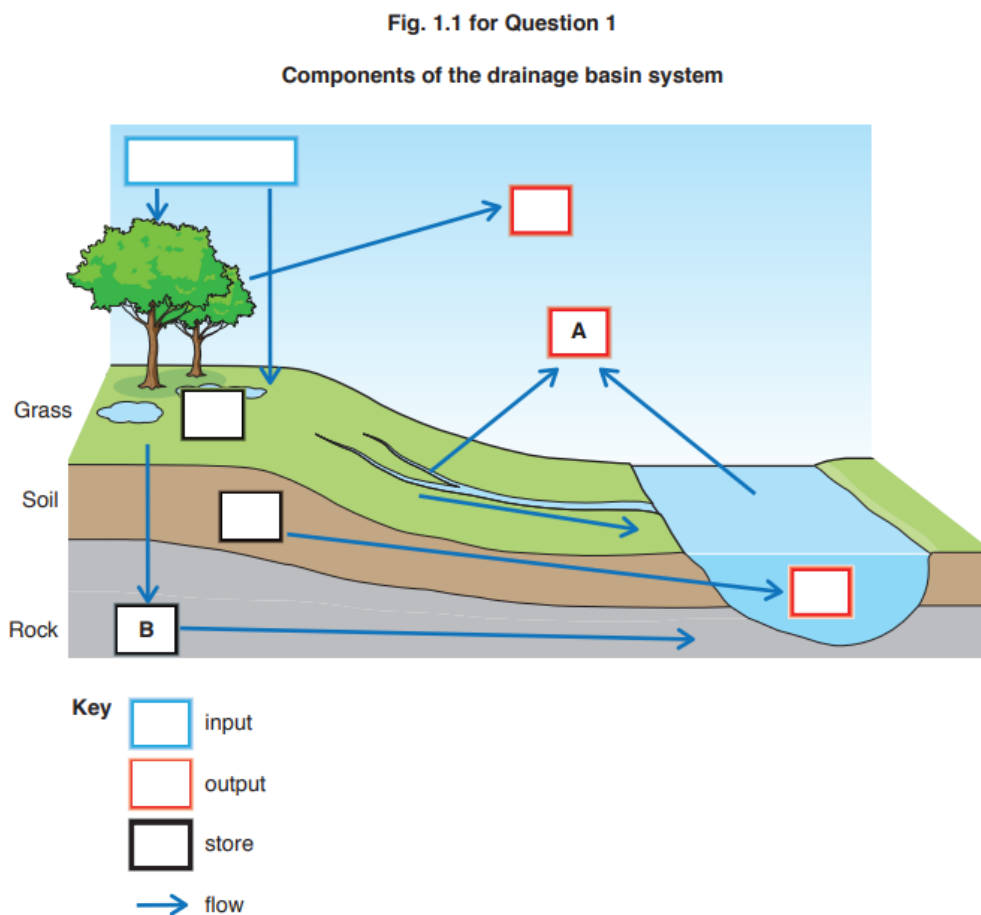
Section A- Answer both questions

QUESTION 1 -Hydrology and fluvial geomorphology

Fig. 1.1 shows components of the drainage basin system.

- (a) Using Fig. 1.1, identify:
- (i) output A; [1]
- (ii) store B. [1]
- (b) With reference to Fig. 1.1, describe the effect of the trees on the drainage basin system. [3]
- (c) Explain why, during a rain event, there could be more overland flow than infiltration. [5]

[Total: 10]



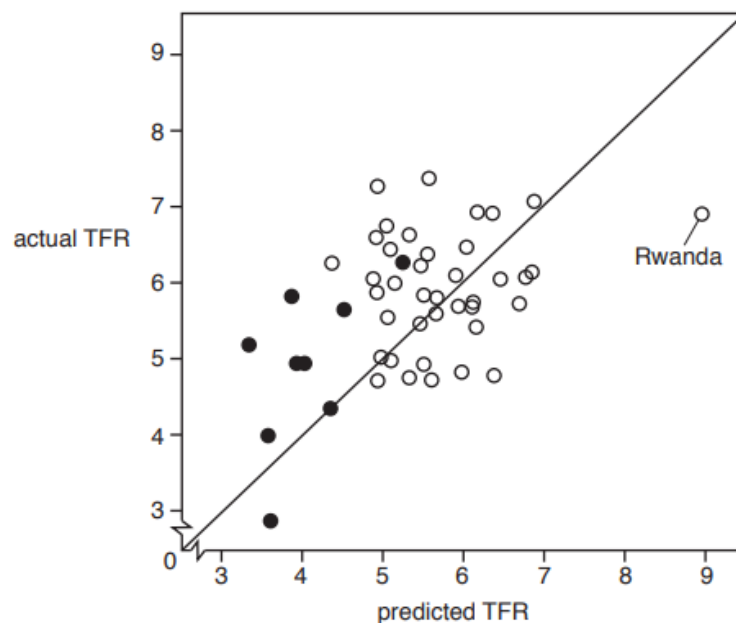
QUESTION 2- Population

Fig. 2.1 shows actual total fertility rate (TFR) and predicted TFR for selected LICs/MICs.

- (a) State the actual TFR and the predicted TFR for Rwanda shown in Fig. 2.1. [2]
- (b) Describe the relationship between TFR and levels of development, using data from Fig. 2.1. [4]
- (c) Outline two factors which help to explain why fertility rates are decreasing in many countries. [4]

[Total: 10]

Fig. 2.1 for Question 2
Actual total fertility rate (TFR) and predicted TFR for selected LICs/MICs



The diagonal line shows where actual TFR equals predicted TFR.

Key

- more developed LICs/MICs
- less developed LICs/MICs

Section B- Choose ONE question

Answer either Question 3 or Question 4.

QUESTION 3

With reference to a recent river flood event, explain the causes of the flood and evaluate attempts to reduce its impact. [15]

QUESTION 4

With the aid of examples, evaluate the possible causes and atmospheric impacts of the enhanced greenhouse effect. [15]

Section C- Choose ONE question

Answer either Question 5 or Question 6.

QUESTION 5

'The consequences of food shortage are always negative.' With the aid of one or more examples, how far do you agree? [15]

QUESTION 6

With the aid of examples, assess why international migration is increasing. [15]

Total Mark=30